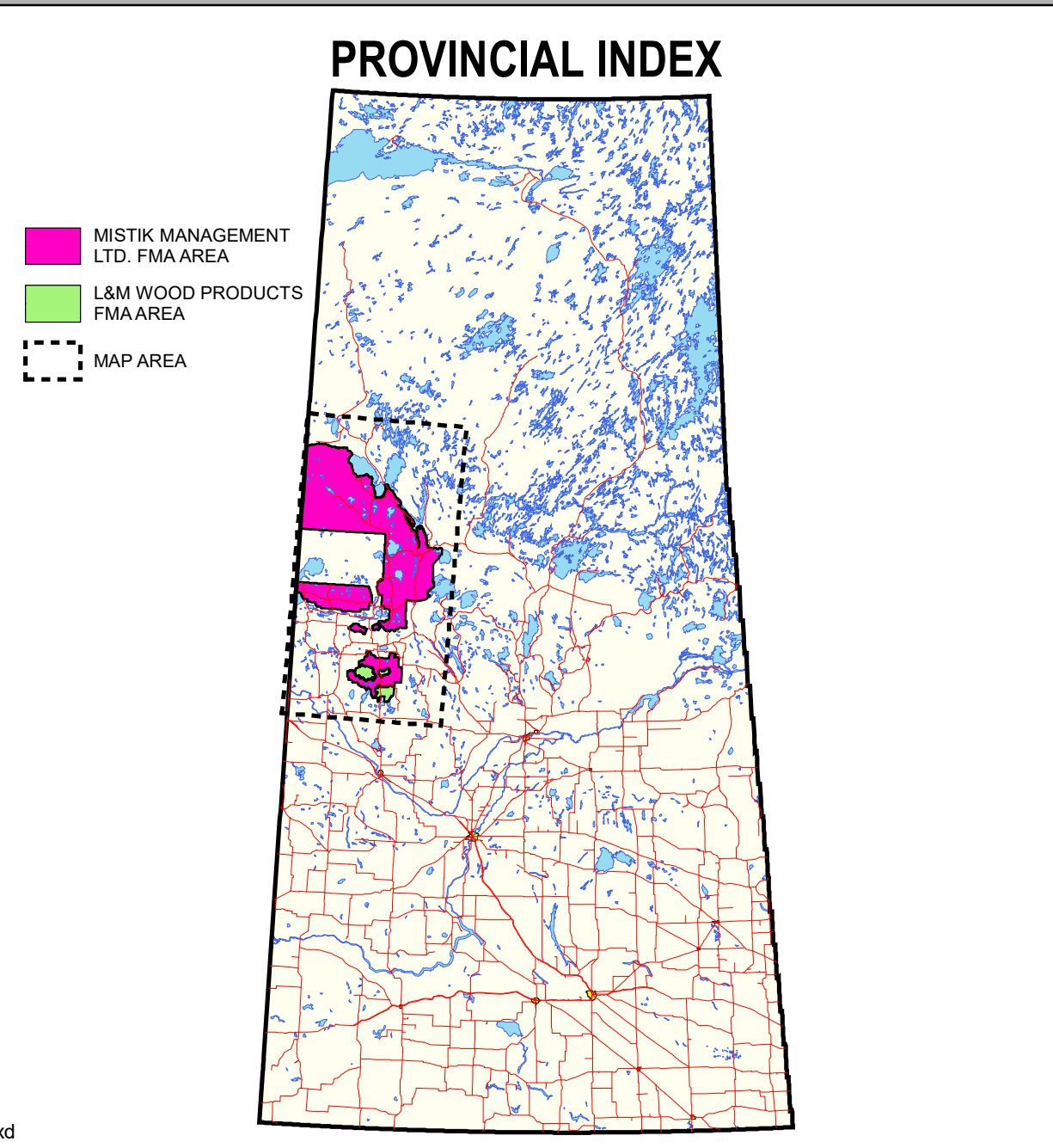


## PERMANENT AND PARTIAL EXCLUSIONS



Map Version: 1.00  
 Original Map Scale: 1:225,000  
 Map Date: April 10, 2019  
 Map Production: Silvacom Ltd.  
 Silvacom Ref: 10481  
 Map File Reference: map\_2019Mistik\_Permanent and Partial Exclusions



### FEATURES OF INTEREST

Permanent Exclusion  
 Partial Exclusion  
**Tactical Plan**  
 T1  
 T2

### PLANIMETRIC LEGEND

<ul style="list-style-type: none"> <li> Paved Highway</li> <li> Gravel Highway</li> <li> Non-Mistik</li> <li> Oil / Gas</li> <li> 3rd Party</li> <li> Class 1 (FRR)</li> <li> Class 2 (IBR)</li> <li> Class 3 (Brush Road)</li> <li> Railroad</li> <li> Lake</li> <li> Creek</li> <li> Provincial Border</li> <li> UTM Tile Boundary</li> </ul>	<ul style="list-style-type: none"> <li> FMA Boundary</li> <li> FMA Exclusion</li> <li> Provincial Park</li> <li> Recreation Site</li> <li> Indian Reserve</li> <li> Air Weapons Range</li> <li> Settlement</li> <li> Timber Reserve</li> <li> Village</li> <li> Town</li> <li> Village / Hamlet</li> <li> Woodlands Office</li> <li> Mill Site</li> </ul>
---	---